

# DWI acquisition schemes and Diffusion Tensor estimation

A simulation-based study

Santiago Aja-Fernández, Antonio Tristán-Vega,  
Pablo Casaseca-de-la-Higuera

Laboratory of Image Processing



Universidad de Valladolid

# Contents

- 1 Introduction
- 2 An introduction to diffusion MRI
- 3 Diffusion Tensor Estimation
- 4 Hypotheses about the acquisition modalities
- 5 Experiments and results
- 6 Conclusions

# Contents

- 1 Introduction
- 2 An introduction to diffusion MRI
- 3 Diffusion Tensor Estimation
- 4 Hypotheses about the acquisition modalities
- 5 Experiments and results
- 6 Conclusions

# Introduction

- Diffusion Weighted Magnetic Resonance Imaging (DW-MRI) well-known established imaging modality used to measure water diffusivity in tissues.
- Based on Diffusion tensor (DT): Least Squares (LS) *de facto* standard to estimate DT.
- [Salvador05] and [Tristan09] theoretical framework to estimate DT from single- and multiple-coil systems using Weighted LS.
- Simulation-based study of the effect of the acquisition schemes over the estimated DT. Four cases: single coil acquisition, multiple coil acquisition (no subsampling) and subsampled multiple coil acquisition with pMRI reconstruction (SENSE and GRAPPA).

- Diffusion Weighted Magnetic Resonance Imaging (DW-MRI) well-known established imaging modality used to measure water diffusivity in tissues.
- Based on Diffusion tensor (DT): Least Squares (LS) *de facto* standard to estimate DT.
- [Salvador05] and [Tristan09] theoretical framework to estimate DT from single- and multiple-coil systems using Weighted LS.
- Simulation-based study of the effect of the acquisition schemes over the estimated DT. Four cases: single coil acquisition, multiple coil acquisition (no subsampling) and subsampled multiple coil acquisition with pMRI reconstruction (SENSE and GRAPPA).

- Diffusion Weighted Magnetic Resonance Imaging (DW-MRI) well-known established imaging modality used to measure water diffusivity in tissues.
- Based on Diffusion tensor (DT): Least Squares (LS) *de facto* standard to estimate DT.
- [Salvador05] and [Tristan09] theoretical framework to estimate DT from single- and multiple-coil systems using Weighted LS.
- Simulation-based study of the effect of the acquisition schemes over the estimated DT. Four cases: single coil acquisition, multiple coil acquisition (no subsampling) and subsampled multiple coil acquisition with pMRI reconstruction (SENSE and GRAPPA).

- Diffusion Weighted Magnetic Resonance Imaging (DW-MRI) well-known established imaging modality used to measure water diffusivity in tissues.
- Based on Diffusion tensor (DT): Least Squares (LS) *de facto* standard to estimate DT.
- [Salvador05] and [Tristan09] theoretical framework to estimate DT from single- and multiple-coil systems using Weighted LS.
- Simulation-based study of the effect of the acquisition schemes over the estimated DT. Four cases: single coil acquisition, multiple coil acquisition (no subsampling) and subsampled multiple coil acquisition with pMRI reconstruction (SENSE and GRAPPA).

[Salvador05] R. Salvador *et al.*, "Formal characterization and extension of the linearized diffusion tensor model," *Human brain mapping*, vol. 24, 2005.

[Tristan09] A. Tristán-Vega, C.-F. Westin, and S. Aja-Fernández, "Bias of least squares approaches for diffusion tensor estimation from array coils in DT-MRI," in *MICCAI 2009*, 2009.

- Diffusion Weighted Magnetic Resonance Imaging (DW-MRI) well-known established imaging modality used to measure water diffusivity in tissues.
- Based on Diffusion tensor (DT): Least Squares (LS) *de facto* standard to estimate DT.
- [Salvador05] and [Tristan09] theoretical framework to estimate DT from single- and multiple-coil systems using Weighted LS.
- Simulation-based study of the effect of the acquisition schemes over the estimated DT. Four cases: single coil acquisition, multiple coil acquisition (no subsampling) and subsampled multiple coil acquisition with pMRI reconstruction (SENSE and GRAPPA).

[Salvador05] R. Salvador *et al.*, "Formal characterization and extension of the linearized diffusion tensor model," *Human brain mapping*, vol. 24, 2005.

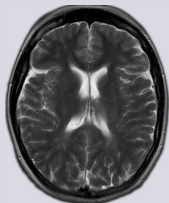
[Tristan09] A. Tristán-Vega, C.-F. Westin, and S. Aja-Fernández, "Bias of least squares approaches for diffusion tensor estimation from array coils in DT-MRI," in *MICCAI 2009*, 2009.



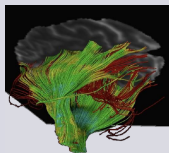
# Contents

- 1 Introduction
- 2 An introduction to diffusion MRI**
- 3 Diffusion Tensor Estimation
- 4 Hypotheses about the acquisition modalities
- 5 Experiments and results
- 6 Conclusions

## MRI *versus* dMRI

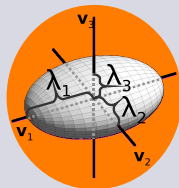


**MRI:** distinguish tissues



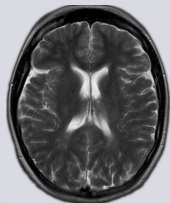
**dMRI:** track nerve fibers

## Main idea behind Diffusion Tensor MRI

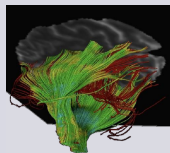


- The white matter is strongly anisotropic
- This anisotropy can be indirectly characterized through the diffusion of water molecules
- A diffusion tensor is assigned to each 3D pixel :
  - Rank-2 tensor  $\rightarrow 3 \times 3$  symmetric matrix
  - Eigenvectors: principal diffusion directions
  - Eigenvalues: amount of diffusion along them

## MRI *versus* dMRI

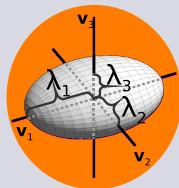


**MRI:** distinguish tissues



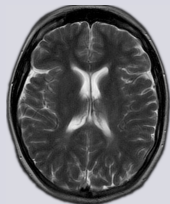
**dMRI:** track nerve fibers

## Main idea behind Diffusion Tensor MRI

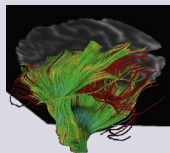


- The white matter is strongly anisotropic
- This anisotropy can be indirectly characterized through the diffusion of water molecules
- A diffusion tensor is assigned to each 3D pixel :
  - Rank-2 tensor  $\rightarrow 3 \times 3$  symmetric matrix
  - Eigenvectors: principal diffusion directions
  - Eigenvalues: amount of diffusion along them

## MRI *versus* dMRI

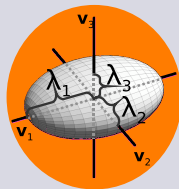


**MRI:** distinguish tissues



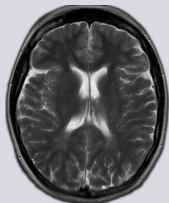
**dMRI:** track nerve fibers

## Main idea behind Diffusion Tensor MRI

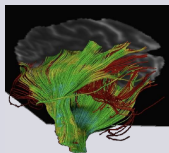


- The white matter is strongly anisotropic
- This anisotropy can be indirectly characterized through the diffusion of water molecules
- A diffusion tensor is assigned to each 3D pixel :
  - Rank-2 tensor  $\rightarrow 3 \times 3$  symmetric matrix
  - Eigenvectors: principal diffusion directions
  - Eigenvalues: amount of diffusion along them

## MRI *versus* dMRI

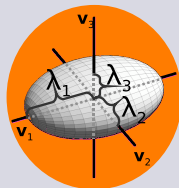


**MRI:** distinguish tissues



**dMRI:** track nerve fibers

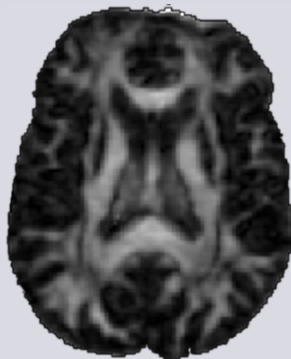
## Main idea behind Diffusion Tensor MRI



- The white matter is strongly anisotropic
- This anisotropy can be indirectly characterized through the diffusion of water molecules
- A diffusion tensor is assigned to each 3D pixel :
  - Rank-2 tensor  $\rightarrow 3 \times 3$  symmetric matrix
  - Eigenvectors: principal diffusion directions
  - Eigenvalues: amount of diffusion along them

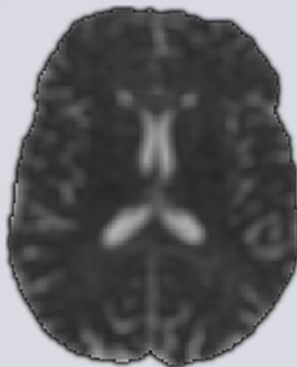
## Scalar measures and beyond

- Scalar magnitudes derived from the eigenvalues
  - Fractional anisotropy:  $\text{std}(\lambda_i)$
  - Mean diffusivity:  $\overline{\lambda_i}$
- Vector measures derived from the eigenvalues and eigenvectors
  - Color coding:  $(e_x, e_y, e_z) \rightarrow (R, G, B)$
  - Glyphs
- Full characterization of diffusion: fiber tracking



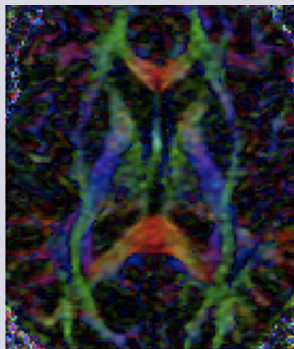
## Scalar measures and beyond

- Scalar magnitudes derived from the eigenvalues
  - Fractional anisotropy:  $\text{std}(\lambda_i)$
  - Mean diffusivity:  $\overline{\lambda_i}$
- Vector measures derived from the eigenvalues and eigenvectors
  - Color coding:  $(e_x, e_y, e_z) \rightarrow (R, G, B)$
  - Glyphs
- Full characterization of diffusion: fiber tracking



## Scalar measures and beyond

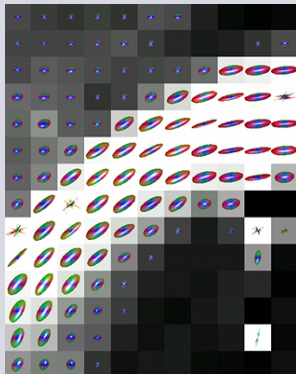
- Scalar magnitudes derived from the eigenvalues
  - Fractional anisotropy:  $\text{std}(\lambda_i)$
  - Mean diffusivity:  $\overline{\lambda_i}$
- Vector measures derived from the eigenvalues and eigenvectors
  - Color coding:  $(e_x, e_y, e_z) \rightarrow (R, G, B)$
  - Glyphs
- Full characterization of diffusion: fiber tracking





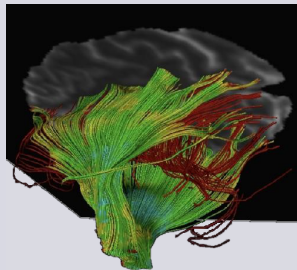
## Scalar measures and beyond

- Scalar magnitudes derived from the eigenvalues
  - Fractional anisotropy:  $\text{std}(\lambda_i)$
  - Mean diffusivity:  $\overline{\lambda_i}$
- Vector measures derived from the eigenvalues and eigenvectors
  - Color coding:  $(e_x, e_y, e_z) \rightarrow (R, G, B)$
  - Glyphs
- Full characterization of diffusion: fiber tracking



## Scalar measures and beyond

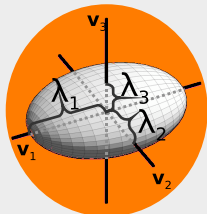
- Scalar magnitudes derived from the eigenvalues
  - Fractional anisotropy:  $\text{std}(\lambda_j)$
  - Mean diffusivity:  $\overline{\lambda_j}$
- Vector measures derived from the eigenvalues and eigenvectors
  - Color coding:  $(e_x, e_y, e_z) \rightarrow (R, G, B)$
  - Glyphs
- Full characterization of diffusion: fiber tracking



# Contents

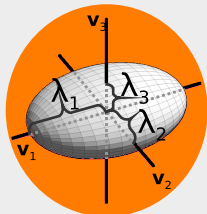
- 1 Introduction
- 2 An introduction to diffusion MRI
- 3 Diffusion Tensor Estimation**
- 4 Hypotheses about the acquisition modalities
- 5 Experiments and results
- 6 Conclusions

# The diffusion tensor (DT)



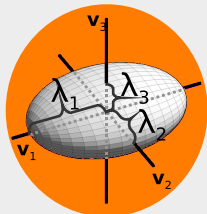
- Most dMRI applications based on single tensor approach.
- Known weakness of single tensor: fiber crossing or kissing.
- Least Squares (LS) techniques *de facto* standard: Weighted Least Squares (WLS).
- The big question: To use more gradient directions or more repetitions (NEX)?
- In [Tristan09]: variance in the estimation reduced by increasing the number of gradient directions. Bias reduced by increasing NEX.
- Precision in estimation depends on **underlying Statistical model**

# The diffusion tensor (DT)



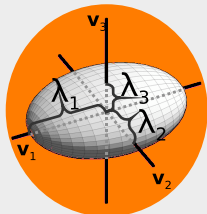
- Most dMRI applications based on single tensor approach.
- Known weakness of single tensor: fiber crossing or kissing.
- Least Squares (LS) techniques *de facto* standard: Weighted Least Squares (WLS).
- The big question: To use more gradient directions or more repetitions (NEX)?
- In [Tristan09]: variance in the estimation reduced by increasing the number of gradient directions. Bias reduced by increasing NEX.
- Precision in estimation depends on **underlying Statistical model**

# The diffusion tensor (DT)



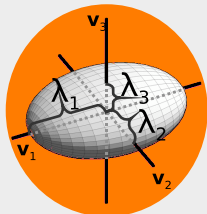
- Most dMRI applications based on single tensor approach.
- Known weakness of single tensor: fiber crossing or kissing.
- Least Squares (LS) techniques *de facto* standard: Weighted Least Squares (WLS).
- The big question: To use more gradient directions or more repetitions (NEX)?
- In [Tristan09]: variance in the estimation reduced by increasing the number of gradient directions. Bias reduced by increasing NEX.
- Precision in estimation depends on **underlying Statistical model**

# The diffusion tensor (DT)



- Most dMRI applications based on single tensor approach.
- Known weakness of single tensor: fiber crossing or kissing.
- Least Squares (LS) techniques *de facto* standard: Weighted Least Squares (WLS).
- The big question: To use more gradient directions or more repetitions (NEX)?
- In [Tristan09]: variance in the estimation reduced by increasing the number of gradient directions. Bias reduced by increasing NEX.
- Precision in estimation depends on **underlying Statistical model**

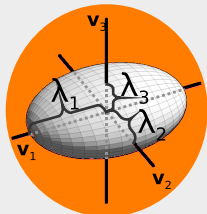
# The diffusion tensor (DT)



- Most dMRI applications based on single tensor approach.
- Known weakness of single tensor: fiber crossing or kissing.
- Least Squares (LS) techniques *de facto* standard: Weighted Least Squares (WLS).
- The big question: To use more gradient directions or more repetitions (NEX)?
- In [Tristan09]: variance in the estimation reduced by increasing the number of gradient directions. Bias reduced by increasing NEX.
- Precision in estimation depends on **underlying Statistical model**



# The diffusion tensor (DT)



- Most dMRI applications based on single tensor approach.
- Known weakness of single tensor: fiber crossing or kissing.
- Least Squares (LS) techniques *de facto* standard: Weighted Least Squares (WLS).
- The big question: To use more gradient directions or more repetitions (NEX)?
- In [Tristan09]: variance in the estimation reduced by increasing the number of gradient directions. Bias reduced by increasing NEX.
- Precision in estimation depends on **underlying Statistical model**

# Signal and noise statistical models in MR

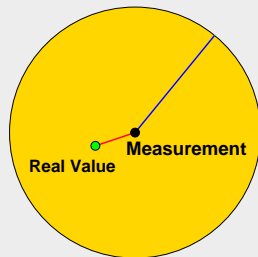
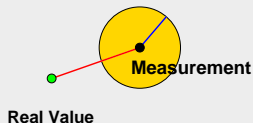
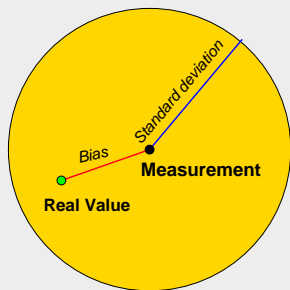
<b>Number of coils</b>	<b>Acquisition</b>	<b>Statistical Model</b>	<b>Stat. model of the background</b>
1 coil	Single coil	Rician (Stationary)	Rayleigh
Multiple coils	No subsampling+ SoS	Non-central Chi  (Non-Stationary)	Central Chi
Multiple coils	pMRI+ SENSE	Rician  (Non-Stationary)	Rayleigh
Multiple coils	pMRI+ GRAPPA+ SoS	Non-central Chi  (Non-Stationary, effective parameters)	Central Chi

# Tensor fitting based on Weighted Least Squares

## Estimation error for a simplified scenario [Tristan09]

The error (**MSE**) for multiple-coil is defined as

$$\text{MSE} \simeq \underbrace{\left[ \frac{K_1}{N} \left( \frac{1}{\text{SNR}^2} - \frac{1}{\text{SNR}^4} (3L - 4) \right) \right]}_{\text{Var(estimation)}} + \underbrace{\left[ \frac{1}{\text{SNR}^4} 3(L - 1)^2 \right]}_{\text{bias}^2(\text{estimation})}$$



# Contents

- 1 Introduction
- 2 An introduction to diffusion MRI
- 3 Diffusion Tensor Estimation
- 4 Hypotheses about the acquisition modalities**
- 5 Experiments and results
- 6 Conclusions

# Hypotheses about the acquisition modalities

- 1 The contribution of the bias will be much smaller for the Rician than for the  $nc\text{-}\chi$  case. Accordingly, the bias on the estimation will be smaller in one-coil systems and in pMRI when reconstructed with SENSE.
- 2 The error due to the variance will be reduced by increasing the number of gradients ( $N$ ). However, this is not the case for the bias, which cannot be reduced from taking more gradients. The only way to do so is by increasing the SNR. This can be done by properly filtering the data or by increasing the NEX (number of repetitions in the scanner).
- 3 pMRI reconstructed images are known to decrease the SNR according to the so-called *g-factor*. So, the variance and bias of the error are expected to grow in these cases when compared to the fully-sampled multiple coil case.
- 4 Finally, equation does not take into account one additional source of error: in subsampled pMRI the missing data must be estimated, i.e. the spatial aliasing must be corrected. The error in this estimation will also propagate to the DT estimation.

# Hypotheses about the acquisition modalities

- 1 The contribution of the bias will be much smaller for the Rician than for the  $nc-\chi$  case. Accordingly, the bias on the estimation will be smaller in one-coil systems and in pMRI when reconstructed with SENSE.
- 2 The error due to the variance will be reduced by increasing the number of gradients ( $N$ ). However, this is not the case for the bias, which cannot be reduced from taking more gradients. The only way to do so is by increasing the SNR. This can be done by properly filtering the data or by increasing the NEX (number of repetitions in the scanner).
- 3 pMRI reconstructed images are known to decrease the SNR according to the so-called *g-factor*. So, the variance and bias of the error are expected to grow in these cases when compared to the fully-sampled multiple coil case.
- 4 Finally, equation does not take into account one additional source of error: in subsampled pMRI the missing data must be estimated, i.e. the spatial aliasing must be corrected. The error in this estimation will also propagate to the DT estimation.

# Hypotheses about the acquisition modalities

- 1 The contribution of the bias will be much smaller for the Rician than for the  $nc\text{-}\chi$  case. Accordingly, the bias on the estimation will be smaller in one-coil systems and in pMRI when reconstructed with SENSE.
- 2 The error due to the variance will be reduced by increasing the number of gradients ( $N$ ). However, this is not the case for the bias, which cannot be reduced from taking more gradients. The only way to do so is by increasing the SNR. This can be done by properly filtering the data or by increasing the NEX (number of repetitions in the scanner).
- 3 pMRI reconstructed images are known to decrease the SNR according to the so-called *g-factor*. So, the variance and bias of the error are expected to grow in these cases when compared to the fully-sampled multiple coil case.
- 4 Finally, equation does not take into account one additional source of error: in subsampled pMRI the missing data must be estimated, i.e. the spatial aliasing must be corrected. The error in this estimation will also propagate to the DT estimation.

# Hypotheses about the acquisition modalities

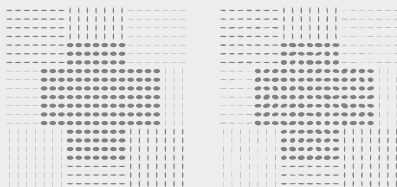
- 1 The contribution of the bias will be much smaller for the Rician than for the  $nc\text{-}\chi$  case. Accordingly, the bias on the estimation will be smaller in one-coil systems and in pMRI when reconstructed with SENSE.
- 2 The error due to the variance will be reduced by increasing the number of gradients ( $N$ ). However, this is not the case for the bias, which cannot be reduced from taking more gradients. The only way to do so is by increasing the SNR. This can be done by properly filtering the data or by increasing the NEX (number of repetitions in the scanner).
- 3 pMRI reconstructed images are known to decrease the SNR according to the so-called *g-factor*. So, the variance and bias of the error are expected to grow in these cases when compared to the fully-sampled multiple coil case.
- 4 Finally, equation does not take into account one additional source of error: in subsampled pMRI the missing data must be estimated, i.e. the spatial aliasing must be corrected. The error in this estimation will also propagate to the DT estimation.



# Contents

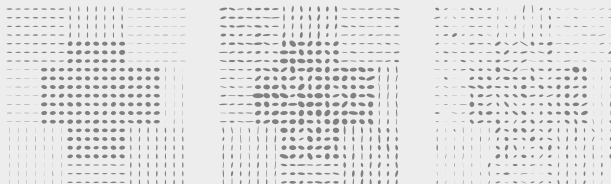
- 1 Introduction
- 2 An introduction to diffusion MRI
- 3 Diffusion Tensor Estimation
- 4 Hypotheses about the acquisition modalities
- 5 Experiments and results**
- 6 Conclusions

# Synthetic experiments



(a) Original

(b) Rician



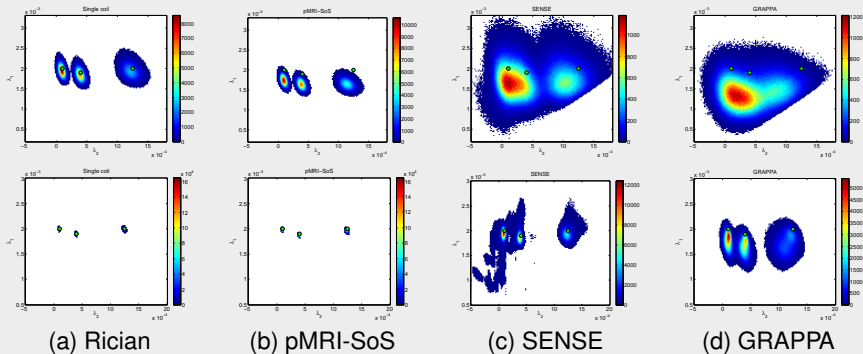
(c) pMRI-SoS

(d) SENSE

(e) GRAPPA

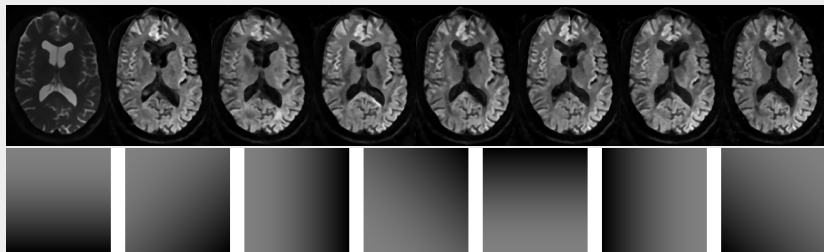
Synthetic 2D Tensor Field 2D used for the first experiment. Original size  $128 \times 128$ . Original and noisy cases, 8 coils, 5 gradients and  $\sigma_n = 35$ .

# Synthetic experiments



Two dimensional histograms of the distribution of the estimated eigenvalues:  $\lambda_1$  vs.  $\lambda_2$ . Top row:  $\sigma_n = 35$  and 5 gradient directions. Low row:  $\sigma_n = 10$  and 15 gradient directions. In green the original eigenvalues.

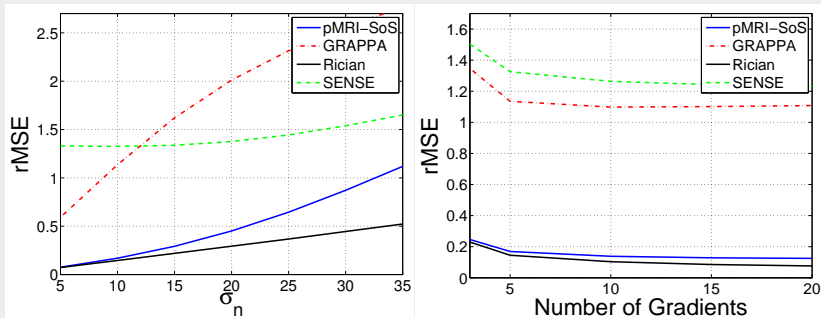
# Realistic DWI phantom



A realistic DWI phantom is used, [Tristan09b]. A  $256 \times 256 \times 81$  volume, spatial resolution of  $1\text{mm} \times 1\text{mm} \times 1.7\text{mm}$ , 15 gradient directions and 1 baseline.

[Tristan09b] A. Tristán-Vega and S. Aja-Fernández, "Design and construction of a realistic DWI phantom for filtering performance assessment," in *MICCAI 2009*, 2009.

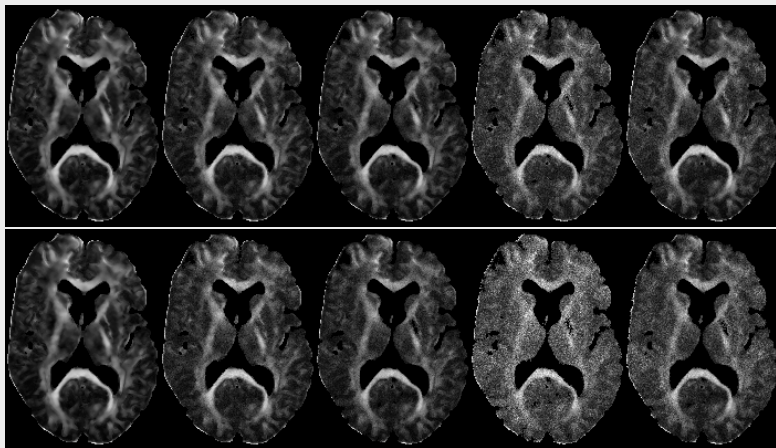
# Realistic DWI phantom



RMSE of the tensor estimation for (Left) different  $\sigma_n$  values (and 5 gradients); (Right) different number of gradients (and  $\sigma_n = 10$ )

$$\text{rMSE}(x) = \frac{\sqrt{(\widehat{\lambda}_1(x) - \lambda_1(x))^2 + (\widehat{\lambda}_2(x) - \lambda_2(x))^2 + (\widehat{\lambda}_3(x) - \lambda_3(x))^2}}{\lambda_1(x)}$$

# Realistic DWI phantom



Fractional Anisotropy. From left to right: Original non-noisy data; Rician case; pMRI-SoS case; SENSE case; GRAPPA case. Top row  $\sigma_n = 10$  (average SNR in gray matter in the gradient images 40). Low row:  $\sigma_n = 35$  (average SNR in gray matter in the gradient images 11.4).

# Contents

- 1 Introduction
- 2 An introduction to diffusion MRI
- 3 Diffusion Tensor Estimation
- 4 Hypotheses about the acquisition modalities
- 5 Experiments and results
- 6 Conclusions**

# Conclusions

- The methods considered can be modeled or approximated by a  $nc\text{-}\chi$  distribution (Rician being a particular case).
- Three variables must be taken into account: the **number of coils** (that mainly affects to the bias in the error), the **number of gradients** (that mainly affects to the variance of the estimation error) and the **SNR** that globally affects the estimation error.
- Methods using multiple coils show a greater bias.
- pMRI: accelerate the acquisition process but worsening the SNR: greater variance and bias in DT estimation.



# Conclusions

- The methods considered can be modeled or approximated by a  $nc\text{-}\chi$  distribution (Rician being a particular case).
- Three variables must be taken into account: the **number of coils** (that mainly affects to the bias in the error), the **number of gradients** (that mainly affects to the variance of the estimation error) and the **SNR** that globally affects the estimation error.
- Methods using multiple coils show a greater bias.
- pMRI: accelerate the acquisition process but worsening the SNR: greater variance and bias in DT estimation.

- The methods considered can be modeled or approximated by a  $nc\text{-}\chi$  distribution (Rician being a particular case).
- Three variables must be taken into account: the **number of coils** (that mainly affects to the bias in the error), the **number of gradients** (that mainly affects to the variance of the estimation error) and the **SNR** that globally affects the estimation error.
- Methods using multiple coils show a greater bias.
- pMRI: accelerate the acquisition process but worsening the SNR: greater variance and bias in DT estimation.

- The methods considered can be modeled or approximated by a  $nc\text{-}\chi$  distribution (Rician being a particular case).
- Three variables must be taken into account: the **number of coils** (that mainly affects to the bias in the error), the **number of gradients** (that mainly affects to the variance of the estimation error) and the **SNR** that globally affects the estimation error.
- Methods using multiple coils show a greater bias.
- pMRI: accelerate the acquisition process but worsening the SNR: greater variance and bias in DT estimation.

# DWI acquisition schemes and Diffusion Tensor estimation

A simulation-based study

Santiago Aja-Fernández, Antonio Tristán-Vega,  
Pablo Casaseca-de-la-Higuera

Laboratory of Image Processing



Universidad de Valladolid